

iWay

iWay 5.5 SM SP2 Release Notes

Version 5 Release 5 Service Manager SP2

EDA, EDA/SQL, FIDEL, FOCCALC, FOCUS, FOCUS Fusion, FOCUS Vision, Hospital-Trac, Information Builders, the Information Builders logo, Parlay, PC/FOCUS, SmartMart, SmartMode, SNAPPack, TableTalk, WALDO, Web390, WebFOCUS and WorldMART are registered trademarks, and iWay and iWay Software are trademarks of Information Builders, Inc.

Due to the nature of this material, this document refers to numerous hardware and software products by their trademarks. In most, if not all cases, these designations are claimed as trademarks or registered trademarks by their respective companies. It is not this publisher's intent to use any of these names generically. The reader is therefore cautioned to investigate all claimed trademark rights before using any of these names other than to refer to the product described.

Copyright © 2008, by Information Builders, Inc. and iWay Software. All rights reserved. Patent Pending. This manual, or parts thereof, may not be reproduced in any form without the written permission of Information Builders, Inc.

Contents

Release Notes iWay 5.5 Service Manager SP2.....	5
About iWay 5.5 Service Manager SP2.....	6
Installation Notes.....	6
iWay Service Manager.....	8
Enhanced Support.....	8
UNC (Universal/Uniform Naming Convention) File and Directory Name Support.....	9
Resolved Issues.....	9
Known Issues.....	13
iWay Business Services Provider.....	16
Supported Repositories.....	16
Updating Web Services.....	17
Enhanced Support.....	21
Resolved Issues.....	21
Known Issues.....	22
iWay Designer.....	22
Enhanced Support.....	22
Usage Notes.....	23
Resolved Issues.....	23
Known Issues.....	24
iWay Explorer.....	25
Enhanced Support.....	25
Known Issues.....	26
iWay Transformer.....	26
Enhanced Support.....	26
Resolved Issues.....	27
Known Issues.....	29
iWay Extensions.....	30
Enhanced Support.....	30
iWay Trading Manager.....	30

Enhanced Support.....	30
iWay Integration Tools.....	30
Application System Adapters.....	31
iWay Application System Adapter for Oracle Applications.....	31
iWay Application System Adapter for J.D. Edwards OneWorld.....	34
iWay Application System Adapter for J.D. Edwards EnterpriseOne.....	34
iWay Application System Adapter for MySAP	35
iWay Application System Adapter for SAP	36
iWay Application System Adapter for Siebel.....	38
iWay Application System Adapter for Lawson.....	40
e-Business Adapters.....	41
Electronic Data Interchange (EDI) X12.....	41
iWay e-Business Adapter for HL7.....	49
iWay e-Business Adapter for HIPAA.....	50
iWay e-Business Adapter for SWIFT.....	51
Network Protocols.....	52
Oracle AQ.....	52
Technology Adapters.....	53
iWay Adapter for RDBMS.....	53
iWay Technology Adapter for Java.....	57
iWay Adapter for ESRI.....	57
Terminal Emulation Adapters.....	57
iWay Emulation Adapter (3270/5250).....	58
Transaction Adapters.....	58
iWay Transaction Adapter for CICS.....	59
iWay Transaction Adapter for IMS.....	59
Customer Support.....	60

Release Notes iWay 5.5 Service Manager SP2

The following Release Notes provide information about enhancements, resolved issues, and known issues for iWay Release 5.5 Service Manager SP2 where indicated. In addition, any issues related to iWay Release 5.5 Service Manager (SM) are provided.

Any important information that became available after the documentation set was complete is also included in these Release Notes.

Topics:

- ❑ About iWay 5.5 Service Manager SP2
- ❑ Installation Notes
- ❑ iWay Service Manager
- ❑ iWay Business Services Provider
- ❑ iWay Designer
- ❑ iWay Explorer
- ❑ iWay Transformer
- ❑ iWay Extensions
- ❑ iWay Trading Manager
- ❑ iWay Integration Tools
- ❑ Application System Adapters
- ❑ e-Business Adapters
- ❑ Network Protocols
- ❑ Technology Adapters
- ❑ Terminal Emulation Adapters
- ❑ Transaction Adapters
- ❑ Customer Support

About iWay 5.5 Service Manager SP2

The iWay 5.5 Service Manager SP2 Release Notes address the following components:

- ❑ Installation Notes. For details, see [Installation Notes](#) on page 6.
- ❑ iWay Service Manager. For details, see [iWay Service Manager](#) on page 8.
- ❑ iWay Business Services Provider. For details, see [iWay Business Services Provider](#) on page 16.
- ❑ iWay Designer. For details, see [iWay Designer](#) on page 22.
- ❑ iWay Explorer. For details, see [iWay Explorer](#) on page 25.
- ❑ iWay Transformer. For details, see [iWay Transformer](#) on page 26.
- ❑ iWay Extensions. For details, see [iWay Extensions](#) on page 30.
- ❑ iWay Trading Manager. For details, see [iWay Trading Manager](#) on page 30.
- ❑ iWay Integration Tools. For details, see [iWay Integration Tools](#) on page 30.
- ❑ Application System Adapters. For details, see [Application System Adapters](#) on page 31.
- ❑ e-Business Adapters. For details, see [e-Business Adapters](#) on page 41.
- ❑ Network Protocols. For details, see [Network Protocols](#) on page 52.
- ❑ Technology Adapters. For details, see [Technology Adapters](#) on page 53.
- ❑ Terminal Emulation Adapters. For details, see [Terminal Emulation Adapters](#) on page 57.
- ❑ Transaction Adapters. For details, see [Transaction Adapters](#) on page 58.

The Release Notes also include information on contacting Information Builders Customer Support Services. For details, see [Customer Support](#) on page 60.

Important: When creating a package to allow Customer Support Services to diagnose a problem, be sure the export package that you create contains all components necessary for reproducing the problem.

Installation Notes

This section contains installation notes pertaining to iWay Service Manager in iWay Release 5.5 Service Manager (SM) Service Pack 2.

- ❑ When you upgrade from a previous iWay Service Manager release, it is recommended to rebuild and redeploy your channels.

- ❑ iWay Service Manager SP2 is certified for Java 2 SE 1.4.xx and 1.5. Java 1.3 is no longer supported.
- ❑ Upgrading from Service Pack 1 to Service Pack 2 does not overlay the wsdl.xml file. Please contact Customer Support to obtain a new wsdl.xml file.
- ❑ The j2ee.jar file is not shipped with the iWay Service Manager 5.5 SM Service Pack 2 installation. If you are planning to use the iWay Adapter for IBM WebSphere MQ (MQSeries) or the iWay Adapter for .NET, you must download this file from the Sun Microsystems Web site and copy it to the [iWayHome]\lib directory.
- ❑ To install iWay Service Manager (SMSP2.13562 build) on a machine that is running Windows Server 2003, you must first download and install the following update for Windows Server 2003 from the Microsoft Download Center:

[WindowsServer2003-KB925336-x86-ENU.exe](#)

To access the Microsoft Download Center, use the following link:

<http://support.microsoft.com/kb/925336>

- ❑ SP2 installer for UNIX does not update the profile. As a result, IWAY55SM is not added into the profile. If the environment variable is required, you must update the profile manually.
- ❑ For optimal performance when running on a Windows platform, it is recommended to run the server out of process by using the following command in the command window:

```
iwsrv.exe base -s start -1 java
```

The `-1 java` option improves server performance by loading Java in a separate process. For more information on how to run the server out of process, see the *iWay Service Manager User's Guide*.

- ❑ Logging is enabled by default in the iWay Service Manager Administration Console. In the iWay Adapter Manager (blue) console, logging was always disabled by default. In a high volume, high performance environment, you may want to disable logging.
- ❑ Before you configure and connect to a JCA configuration using iWay Explorer (Eclipse version), you must perform the following steps:

1. Copy the j2ee.jar file to the following directory:

[\[eclipse_home\]\plugins\com.iwaysoftware.eclipse.common](#)

2. Restart the iWay Integration Tools (Eclipse) application.

Note: The j2ee.jar file is not shipped with the iWay Service Manager 5.5 SM Service Pack 2 installation. You must download this file from the Sun Microsystems Web site.

- ❑ Windows 64-bit machines will only run with the service installed with the `-l java` option. For more information on how to reinstall the service with this option, see the *iWay Installation and Configuration* documentation.
- ❑ If you are creating a JCA configuration using iWay Explorer and the `iwtpi.jar` file is included in the `iway55sm\lib` directory, the JCA configuration will not work. Specifically, the list of available adapters is not displayed under the iWay Adapters node.

iWay Service Manager

In this section:

Enhanced Support

UNC (Universal/Uniform Naming Convention) File and Directory Name Support

Resolved Issues

Known Issues

This section contains enhanced support information, resolved issues, and known issues that are applicable to iWay Service Manager in iWay Release 5.5 Service Manager (SM), Service Pack 1, and Service Pack 2.

Enhanced Support

Service Pack 2

- ❑ iWay Service Monitor separates discovery and monitoring of services by providing the Enable Discovery and Enable Monitor options
- ❑ iWay Service Monitor provides the ability to monitor iWay channels
- ❑ iWay Deployment Tool is provided to enable the deployment of iWay Service Manager to other J2EE containers
- ❑ Added granularity of special register handling yielding message, flow, and thread special registers

Service Pack 1

- ❑ The File listener now ensures that partial files are not selected (12592018)
- ❑ The File listener supports lexical searches
- ❑ Service Manager supports SMTP over a secure channel
- ❑ The internal listener now allows a restart after items are left in a safestore (21572070)

- ❑ Logic has been added to the internal listener to allow more flexibility in stopping and starting the listener (21182031)
- ❑ An improved dispatching algorithm allows improved listener processing (20732028)
- ❑ Improvements to iwsrv.exe to load dll files in non-base configurations (21372119)
- ❑ XDXDRunCmdAgent added to allow access to operating system commands

UNC (Universal/Uniform Naming Convention) File and Directory Name Support

iWay Software **does not** recommend using UNC names in IWay Service Manager where file or directory descriptors are used, for example, in a File listener. The following reasons are provided:

- 1. Portability:** UNC names, as iWay properties, are meaningful only in Windows platforms, not in UNIX/Linux/HP-UX/AIX platforms.
- 2. Authentication:** There are no parameters for an ID and Password to be associated with a UNC file and directory names in iWay Service Manager.
- 3. Performance:** Anti-virus and other programs can interfere with UNC file access, which can degrade performance.

The preferred mechanism to access network files and directory resources is to statically map them using operating system commands such as "net use" (or a GUI equivalent) in Windows and "mount" in UNIX/Linux platforms.

Resolved Issues

Service Pack 2

- ❑ Support for restart from the IWay Service Manager Administration Console (31902563)
- ❑ Support for accessing the IWay Service Manager Administration Console via SSL
- ❑ Ability to deploy, start, and stop a channel from the iWay Service Manager Administration Console if the system has multiple virtual IP (33542014,33542016)
- ❑ Ability to filter channel display (30332504)
- ❑ XDDelValStream preparser support for Carriage Return in the data (30382557)
- ❑ iWay Adapter for MQSeries correctly handle default reply-to queue (32742003)
- ❑ Ebix wizard to ensure unique names of defined Ebix (31862510)
- ❑ iWay RDBMS Listener to check for mandatory Driver and URL fields (32132576)

- ❑ Enhancements to installer to support Japanese characters (30942505)
- ❑ Enhancements to iSM console to support Japanese characters (31052512)
- ❑ Emitter followed by Deactivated object in a process flow is incorrectly ignored (30572536)
- ❑ XDDeIVal Preparser support for Carriage Return In Parsed Field (30382557)
- ❑ Correctly access XSL transformations defined in the registry (32972019)
- ❑ Improvements to Archive Manager (32052551)
- ❑ Activity Facility support for Microsoft SQL Server 2005 (32612565)
- ❑ Correctly refresh Data Provider list for Services Providers
- ❑ XDOracleAQEmitAgent improvements (31452532)
- ❑ XDJMSReadAgent to correctly retrieve messages for OpenJMS queue (32422529)
- ❑ XDWSClientAgent enhanced to correctly strip soap envelopes (32342512)
- ❑ XDFileEmitAgent improved to correctly run defined premitters (33332005)
- ❑ XDSQLAgent ability to reconnect to DBMS if connectivity is lost (32132543)
- ❑ File Emit Object to support transactionality and rollback if necessary
- ❑ java.util.ConcurrentModificationException (31782581)
- ❑ Support for In Transformer within a route (31662509)
- ❑ Nested process flows to operate without restarting the server (31362552)
- ❑ Spurious error messages removed when monitoring enabled for iWay Service Monitor
- ❑ iWay Adapter for MQSeries support for SSL (31102035)
- ❑ iWay Adapter for MQSeries support for rollback on error-to (33452512)
- ❑ iWay Adapter for MQSeries ability to define MQ PORT via SREG (33032535)
- ❑ iWay Adapter for MQSeries correctly finds the defined retry queue when a failed process flow throws a retry signal (31422536)
- ❑ iWay Adapters for HTTP/SOAP security improvements to ensure that a user can not view disk directories outside of a defined document root (31222023)
- ❑ Support for IBM 64-bit 1.4.2 JVM as valid runtime environment
- ❑ Data Provider support for IBM DB2 App Driver
- ❑ iWay Adapter for email to correctly route error output to error-to location (33042522)

- ❑ iWay Adapter for Email special register support for TO: and CC:
- ❑ iWay Internal Listener support for persistence (32472002)
- ❑ Ensure all conduit names are unique (31432534)
- ❑ Console enhancements to ensure all parameters included when defining services (31582508)
- ❑ Archive manager support for filtering (30942507)
- ❑ Archive manager to provide correct description for EBIX (32832507)
- ❑ Archive manager support for importing from managed server (33102557)
- ❑ A process flow exposed as a Web service yielded a memory leak
- ❑ Package Manager updated to include system level process (31902538)
- ❑ Provide appropriate error message if an incorrect password is supplied for Data Provider (33382571)
- ❑ iWay File Listener will not start if an input directory does not exist or is using an undefined SREG (32772518)
- ❑ Improvements to function compiler to support SREG(xxx) +1 (31022570)
- ❑ Remove passwords from DeepDebug traces (33462511)
- ❑ iWay function language support for arithmetic functions such as Add, Sub, Multiply, Divide, and _CEIL (33332516)
- ❑ Enhancements to XDWSClientAgent to correctly strip SOAP Envelope for non default namespaces (32342512)
- ❑ Ability to create a package with a Japanese description (31052511)
- ❑ Additional messages translated into Japanese (33512511)
- ❑ Additional translation of iWay Service Manager to Japanese (32062507)
- ❑ Enhancements to XMLSPLITiterator to return blob document
- ❑ Improvements to console to correctly handle Finish button (31582508)
- ❑ Support for filtering when creating an archive (33532517)
- ❑ Consistency of filtering across configuration screens (30942507)
- ❑ Support for the internal emitters with persistence (32472002)
- ❑ Preserve spaces in CDATA (33042509 32192537)

- ❑ iWay function _flatof to support CDATA format (31972513)
- ❑ Shutdown scripts fails for non-localhost machines (33412516)
- ❑ Preserve correct Log Mode settings (32082507)
- ❑ The iwFAIL agent can be used in a process flow with an MQ listener

Service Pack 1

- ❑ XDEmailEmitAgent supports timestamp and sequencing for attachment name (22632513)
- ❑ XDMQEmitAgent unable to connect to queue manager after network failure (21932049)
- ❑ Ability to refresh JMSQ listener parameters and start the listener if the required JNDI Factory setting is not configured (21432066)
- ❑ Ability to configure adapter parameters using the XDSREGAgent
- ❑ FTP listener to close sockets after a “550 No files found” response is received from the FTP server (23252540)
- ❑ Changes to the AdapterAgent error document to remove the CDATA element tag (23552541)
- ❑ Oracle AQ listener correction to the Polling Interval algorithm (23452537)
- ❑ Correct schema/WSDL for a process flow containing multiple relationships to one end node (30102042)
- ❑ Ability to create Web services for iWay Flows whose start and end schemas have default namespaces (22912509)
- ❑ AS1 listener to correctly process multiple messages (22912509)
- ❑ Ability to pass Special Register (SREG) values from a process flow to sub-flows (21512078)
- ❑ When processing an Excel document, the Excel Preparser generates an “Unknown cell type:String Formula” error (30092525)
- ❑ In the Registry menu of the iWay Service Manager Administration Console, ability to filter in the Channels pane (30332504)
- ❑ XDDelValStream Preparser support for carriage returns in data (30382557)

5.5 Service Manager

- ❑ CS3 listener handles "-" in input string (21382066)
- ❑ Improvements to the CS3Listener to handle parameters larger than 80 bytes (22022075)
- ❑ ClassCastException produced when creating a diagnostic zip file (21092076)
- ❑ Adapter for MQ supports non base64 correlation ID by removing binary (21222043)
- ❑ Ability to export system packages to an iWay package (21382022)
- ❑ Support for the COND function in a multi-threaded environment (21642037)
- ❑ Ability to correctly handle the number of active sessions (21032008)
- ❑ Additional checking included to ensure a package name begins with an alpha character (21582065)
- ❑ MSMQ memory management (20872079)
- ❑ Enhanced memory management when running iWay process flows (13182054)
- ❑ XDXMLSplit support for empty attributes (21642123)
- ❑ XDSQLAgent enhanced support for connection pooling (22632010)
- ❑ Security enhancement in HTTP(S) listener to prevent intrusion beyond DOCROOT (21522081)
- ❑ XDFTPEmitAgent supports short continuation line reply from FTP Server (22582532)
- ❑ Improved file handling after FTP reconnect (12592018)

Known Issues

- ❑ When you are using the Deployment Manager and you select the *ibse-port* option in the Special Registers section, the web.xml file (version 2.3 and 2.4) that is generated contains the following typo:

```
<init-param> .....
<param-name>ibse-port</param-name>
<param-value>9000</param-value>
</init-param>
```

The correct tag is shown in the following example:

```
<init-param> .....
<param-name>ibse-port</param-name>
<param-value>9000</param-value>
</init-param>
```

- ❑ When you are using the Deployment Manager, the web.xml file (version 2.3) that is generated does not contain the mandatory `<!DOCTYPE>` tag. As a workaround, you must manually add this tag as shown in the following example:

```
<!DOCTYPE web-app PUBLIC "-//Sun Microsystems, Inc.//DTD Web Application 2.3//EN" "http://java.sun.com/dtd/web-app_2_3.dtd">
```

- ❑ When you are using the Deployment Manager, the required `iwrdbms.jar` file is not included automatically in the generated `.war` file. As a result, the RDBMS adapter is not available. As a workaround, modify the `build.xml` file (generated ANT script) by adding a `COPY` instruction for target "AddiWayComponents". For example:

```
<copy todir="${build.dir}/WEB-INF/lib">
<fileset dir="${home.dir}/lib">
<include name="iwrdbms.jar"/>
</fileset>
</copy>
```

- ❑ Deployment Manager fails due to `*.lck` files, which are locked when running iWay Service Manager from iWay Integration Tools (Eclipse). As a workaround, modify the `build.xml` file (generated ANT script) by adding `EXCLUDE` lines to the `COPY` instruction for target "AddiWayComponents". For example:

```
<copy todir="${build.dir}/WEB-INF/config">
<fileset dir="${home.dir}/config">
<include name="base/*/*"/>
<exclude name="base/log/*"/>
<exclude name="base/*.lck"/>
</fileset>
</copy>
```

- ❑ When using e-Business adapters, iWay Service Manager configurations should be created based on the RAW configuration. This avoids dependencies on any deployed Ebix.
- ❑ The XMLGPreParser fails when only the name of the transformation template to apply is provided during configuration. As a workaround, provide the full path to the transformation template using the following format:

```
FILE:///C:/template.xch
```

This format instructs the XMLGPreParser to use the File protocol to find the transformation template

- ❑ The string functions `substr-after` and `substr-before` are now renamed to `_after()` and `_before()` respectively
- ❑ AmberPoint Version 5.2.15 is supported. AmberPoint Version 6.0.11 is currently not certified with iWay Service Manager

- ❑ When using iWay Service Monitor, channel monitoring is currently supported only for XML payloads. Non-XML output will generate Fault errors in AmberPoint
- ❑ The Archive Manager does not import process flows that reside in a configuration (33102557)
- ❑ Using Package Manager, there is a known issue when you reinstall and uninstall packages that include .JAR files. As a workaround, use the Adapter Manager (blue) console
- ❑ The DB2 JCC driver is not supported in the Data Provider page. DB2 is only available in the Services Provider page when you select it from the drop-down list. The driver is not listed because the Data Provider page is not familiar with it. The Services Provider page is only aware of the drivers that are available from the drop-down list.
- ❑ Using CDATA in a mixed content context is not properly supported. For example, using the following CDATA tag will fail:

```
<tag><![CDATA[ some content ]]><b>child text</b></tag>
```

However, a CDATA tags works correctly when it is the only item inside a tag pair (no additional sibling elements, other text, or white space).

As a workaround, make the following modifications to the existing CDATA tag:

```
<tag><a><![CDATA[ whatever ]]></a><b>child text</b></tag>
```

Introducing a new tag pair (<a>) around the CDATA tag isolates it from any activity that is occurring inside the parent tag (<tag>).

- ❑ The HTTP listener generates a null pointer exception when a private key password in a keystore is different from a keystore password. As a workaround, make sure these passwords are identical.
- ❑ If you upgrade from iWay 5.5 SM to iWay 5.5 SM SP1, the wsdl.xml file located in the following directory is incorrect:

```
<iWayHome>\config\base\wsdl\IVP\iwayivp
```

This will cause an invalid WSDL file to be created for all Web services. Please contact Customer Support to obtain the correct version of the wsdl.xml file.

- ❑ When dependencies (such as called process flows) are deployed with a channel, shared memory maps are not updated in a running system. An updated architecture in the next release to default search for objects not in memory is under consideration. However, for Service Pack 2 and earlier releases of iWay Service Manager, the following workarounds are available:

1. Restart the server.

2. In iWay Explorer, create a new target for the iWay Adapter and create an iWay Business Service from the inner process flow. In iWay Designer, use the Web Service object to attach the desired inner process flow as a service to the outer process flow. When the outer process flow is deployed, restarting the server is not required. This is the recommended workaround. To be available as an iWay Business Service, the inner process flow must have schemas associated with its Start and End objects, and be published into the system area of the configuration.
- ❑ The Adapter Manager console is included in this release to give you maximum configuration flexibility. To access the Adapter Manager console, use the following URL:
<http://hostname:9999/ixts>
 - ❑ XDXMLSplit support for DBCS characters (20722007)
 - ❑ Activity Facility Handler maintained after switching the console language (31642556)

iWay Business Services Provider

In this section:

Supported Repositories
Updating Web Services
Enhanced Support
Resolved Issues
Known Issues

The following topics provide information about iWay Business Services Provider (iBSP) Release 5.5 Service Manager, Service Pack 1, and Service Pack 2.

Supported Repositories

The following table lists supported repositories for iWay Business Services Provider.

Oracle	SQL Server	DB2	Sybase	MAXDB
8i	2000	7	12.5	7.5
9i	2005	8		
10g		9		

Updating Web Services

This section describes how to use Web service providers in iWay Service Manager to update connection information for Web services.

Use the following link to access iWay Business Service Provider configuration information:

<http://localhost:port/admin/iwconfig.ibs>

where:

localhost

Is the host machine where iWay Service Manager is installed. The default value is *localhost*.

port

Is the SOAP port where iWay Business Service Provider is listening. The default port is 9000.

The iWay Business Service Provider (iBSP) Configuration Service page opens:



iWay Business Service Provider (**iBSP**) Configuration Service

The following operations are supported. For a formal definition, please review the [Service Description](#).

- **GETIBSECONFIG**
Use this method to retrieve the current iBSE configuration information.
GETIBSECONFIG takes no parameters.
- **SETIBSECONFIG**
Use this method to edit the current iBSE configuration information.
SETIBSECONFIG takes one (1) parameter and SOAP request takes 1

Scroll down and click the *SETMTHCONNECTION* link as shown in the following image.

- **SETMTHCONNECTION**

Use this method to update the connection information for a particular

SETMTHCONNECTION takes one (1) parameter and SOAP request takes

```
<SETMTHCONNECTION xmlns="urn:schemas-iwaysoftware-com:dec2002:iwse:af">
  <servicename>demo</servicename>
  <methodname>demo</methodname>
  <descriptor>
    <option title="">
      <group title="">
        <param label="User" name="user" required="true" type="" value=""/>
        <param label="PWD" name="password" required="true" type="" value=""/>
        <param label="Conn" name="conn" required="true" type="" value=""/>
      </group>
    </option>
  </descriptor>
</SETMTHCONNECTION>
```

The SETMTHCONNECTION page opens as shown in the following image.



Click [here](#) for a complete list of operations.

SETMTHCONNECTION

Use this method to update the connection information for a particular web service method

SETMTHCONNECTION takes one (1) parameter and SOAP request takes the format of :

```
<SETMTHCONNECTION xmlns="urn:schemas-iwaysoftware-com:dec2002:iwse:af">
  <servicename>demo</servicename>
  <methodname>demo</methodname>
  <descriptor>
    <option title="">
      <group title="">
        <param label="User" name="user" required="true" type="" value=""/>
        <param label="PWD" name="password" required="true" type="" value=""/>
        <param label="Conn" name="conn" required="true" type="" value=""/>
      </group>
    </option>
  </descriptor>
</SETMTHCONNECTION>
```

Test

To test the operation using the [SOAP protocol](#), click the 'Invoke' button.

input xml:

Copy the following sample XML request document that is provided and paste it into the input xml field:

```
<SETMTHCONNECTION xmlns="urn:schemas-iwaysoftware com:dec2002:iwse:af">
  <servicename>demo</servicename>
  <methodname>demo</methodname>
  <descriptor>
    <option title="">
      <group title="">
        <param label="User" name="user" required="true" type="" value=""/>
        <param label="PWD" name="password" required="true" type="" value=""/>

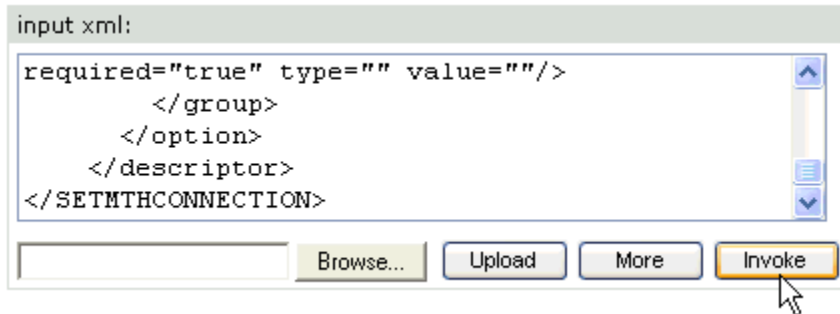
        <param label="Conn" name="conn" required="true" type="" value=""/>
      </group>
    </option>
  </descriptor>
</SETMTHCONNECTION>
```

In the `<servicename>` tag, replace the sample value **demo** with the name of the Web service you want to modify.

In the `<methodname>` tag, replace the sample value **demo** with the name of the Web Service method you want to modify.

Modify the following tags by specifying a new user name and password value:

```
<param label="User" name="user" required="true" type="" value="User_Test"/>
<param label="PWD" name="password" required="true" type="" value="UT1000"/>
```



Click *Invoke*.

A response document is displayed as shown in the following image.

```
<?xml version="1.0" encoding="UTF-8" ?>
<SOAP-ENV:Envelope xmlns:xsd="http://www.w3.org/2001/XMLSchema" xmlns:SOAP-
ENV="http://schemas.xmlsoap.org/soap/envelope/" xmlns:xsi="http://www.w3.org/2001/XMLSchema-instance">
  <SOAP-ENV:Body>
    <SETMTHCONNECTIONResponse xmlns="urn:schemas-iwaysoftware-com:jul2003:ibse:config" />
  </SOAP-ENV:Body>
</SOAP-ENV:Envelope>
```

To verify the connection information changes you made to your Web service use the GETMETHODCONNECTION method.

Click the *GETMTHCONNECTION* link as shown in the following image.

- **GETMTHCONNECTION**
Use this method to retrieve the connection information for a particular
GETMTHCONNECTION takes Five (2) parameters:

servicename web service name
methodname web service method name

The GETMTHCONNECTION page opens.



Click [here](#) for a complete list of operations.

GETMTHCONNECTION

Use this method to retrieve the connection information for a particular web service method

GETMTHCONNECTION takes Five (2) parameters:

servicename web service name
methodname web service method name

Test

To test the operation using the [SOAP protocol](#), click the 'Invoke' button.

Parameter	Value
servicename:	<input type="text" value="test2"/>
methodname:	<input type="text" value="startend3"/>

GETMTHCONNECTION is a method that can be used to retrieve the connection information for a Web service method.

Enter values for the following parameters:

- ❑ **servicename** - The name of the Web Service
- ❑ **methodname** - The name of the Web Service method.

Click *Invoke*.

The result is displayed as shown in the following image.

```
<?xml version="1.0" encoding="UTF-8" ?>
- <SOAP-ENV:Envelope xmlns:xsd="http://www.w3.org/2001/XMLSchema" xmlns:SOAP-
  ENV="http://schemas.xmlsoap.org/soap/envelope/" xmlns:xsi="http://www.w3.org/2001/XMLSchema-instance">
- <SOAP-ENV:Body>
- <GETMTHCONNECTIONResponse xmlns="urn:schemas-iwaysoftware-com:jul2003:ibse:config">
- <descriptor>
- <option title="">
- <group title="">
  <param value="" required="true" type="" label="User" name="User_Test" />
  <param value="" required="true" type="" label="PWD" name="UT1000" />
  <param value="" required="true" type="" label="Conn" name="conn" />
</group>
</option>
</descriptor>
</GETMTHCONNECTIONResponse>
</SOAP-ENV:Body>
</SOAP-ENV:Envelope>
```

Notice the user name is User_Test and the password is UT1000, which reflects the values that were specified for the SETMTHCONNECTION method.

Enhanced Support

This section describes enhanced support for iWay Business Services Provider (iBSP).

- ❑ iWay Business Services Provider is installed with an embedded HSQL repository
- ❑ A repository migration facility provides portability for your existing metadata and iWay Business Services
- ❑ Support for MaxDB as iBSP repository (32622570)
- ❑ Support for Microsoft SQL Server 2005 as iBSP repository (40142013)
- ❑ Ability to migrate to a Microsoft SQL Server 2005 repository using the console migration tools (31102516)
- ❑ Support for multithreading connection to Microsoft SQL Server (31562031)
- ❑ Support for preserving of Adapter/User defined namespace within the WSDL

Resolved Issues

Service Pack 2

- ❑ Deleting RDBMS targets does not delete statements in the iBSP repository (32702510)
- ❑ Packaging of iBSP install scripts on UNIX (33412541)

Service Pack 1

- ❑ Ability to reconnect to an iWay Business Services Provider (iBSP) database repository when the connection is lost (21702004)
- ❑ Connection pooling support for an Oracle repository that is used by iWay Business Services Provider (30482504)

5.5 Service Manager

- ❑ Support for connection pooling when using Oracle as the iBSP repository (21372123)

Known Issues

- ❑ Unable to migrate an HSQL repository to an SQL Server 2005 repository
- ❑ When migrating to an SQL Server 2000 repository, the iwse.sql script must be used before running the Migration utility in iWay Service Manager. This issue does not occur when migrating to SQL Server 2005
- ❑ Upgrading from Service Pack 1 to Service Pack 2 does not overlay the wsdl.xsl file
- ❑ iSM console does not allow you to change the default SOAP port

iWay Designer

In this section:

Enhanced Support
Usage Notes
Resolved Issues
Known Issues

The following topics provide information about iWay Designer Release 5.5 Service Manager, Service Pack 1, and Service Pack 2.

Enhanced Support

- ❑ An additional parameter called *Source of Data* is available in Service Pack 2 for File Write objects.
- ❑ Enable Testing of process flows that have been created in the registry
- ❑ ETL object has been enhanced to allow for passing of job parameters
- ❑ ReportCaster object to allow for seamless integration with WebFocus reports scheduling

- ❑ Online context sensitive help is available

Usage Notes

- ❑ Regarding Service objects and Iterator objects in Registry-based projects, when first installed, the Registry contains only the classes that support the iWay Samples. To add service classes and Iterator classes to the Registry from the base configuration, use the Service Manager Console (select *Tools, Archive Manager, Services, Import components from a managed server, base*).
- ❑ During flow testing, a time-out value of zero seconds will be interpreted as ten seconds in order to prevent flows that do not terminate.

Resolved Issues

Service Pack 2

- ❑ Designer fixed to allow to access Transformation properties (30932552)
- ❑ XPATH builder improvements to display (32002560)
- ❑ All checkboxes are deselected by default on the Select Publish Locations dialog box
- ❑ Enhancements to the BI object to include a Refresh capability when browsing for reports
- ❑ Enhancements to the Process Flow object to allow for dynamic selection of a process flow
- ❑ Set/Synch support in a subflow (32012521)
- ❑ Edge/thread improvements in cases where a process flow calls a subflow (32552510)
- ❑ Ability to connect to iSM over SSL (33522537)
- ❑ Process flow loses Process Object dependency guide when the Process Object is modified (33182523)
- ❑ Ability to propagate user-defined properties between iWay Service Manager and iWay Designer (use with services such as XDSREGAgent) (31802526)
- ❑ Enabling the retrieval of user parameters from iWay Service Manager and sending user-defined parameters to iWay Service Manager properly
- ❑ Enabling to map the runtime variable 'system' to 'message'. A new attribute called SCHEMAVERSION is added to a flow
- ❑ WebService Object cleanup: Enabling the support of custom events at the GUI level and during run time
- ❑ ETL Object does not distinguish an empty user and password

- ❑ Ability to publish a process flow to a Remote Server registry
- ❑ Property Manager to show the correct type for registers imported from the Registry Register Set.
- ❑ Fixed iWay Designer crash problem: Designer->Explorer tab after trying to reconnect to the target
- ❑ Ability to copy multiple objects and preserve their relations and orientation
- ❑ Fix to Service object (User Defined Properties): Entries are no longer repeated each time they are viewed

Service Pack 1

- ❑ Corrected access to the iWay Service Manager Administration Console (23192507)
- ❑ Fixes to the Join object, which has conditional edges (23572508)

5.5 Service Manager

- ❑ Support to run pre-emitters and encryptors on named emitters (12632056)
- ❑ Ability to define adapters in non-base configurations (11962049)
- ❑ Broken DBCS characters appeared during export to and import from Service Manager console and Designer (22152085)

Known Issues

- ❑ The following error message is generated if iWay Designer runs out of memory:

```
Failed to load the repository 'xxx'  
Error processing iWay repository:  
java.lang.NullPointerException
```

As a result of this error, the user is unable to save their process flow.

As a workaround, perform the following steps:

- 1.** Close iWay Designer.
- 2.** Stop iWay Service Manager.
- 3.** Delete the following file:

```
[iWayHome]\etc\repository\designer\PFREPOSITORYLOOKUP.xml
```

- 4.** Start iWay Service Manager.
- 5.** Open iWay Designer.

To prevent this error from occurring in the future, add a Windows Environment Variable named `_java_options` and set its value to `-Xmx512m`.

- ❑ Currently, the Extract Transform Load (ETL) object does not allow you to change connection information dynamically. As a workaround, configure the `com.ibi.agents.XDETLAgent` service in a Service object and use `SREG(Value)` for your connection string.
- ❑ If you upgrade from iSM Service Pack 1 to Service Pack 2, you must recreate all Emitter objects (including Emitter agents) that currently exist in your process flows to avoid incorrect results.
- ❑ Join and Junction objects should be mixed in a process flow with caution. When a Join object is located after a Junction object in a flow, results may be unpredictable.
- ❑ Test run of a process flow in the server can not be tested against the registry
- ❑ If you import a process from an iWay Service Manager Configuration or Registry, and the process refers to a Transform project, an error occurs when you try to test run the process.
- ❑ Stored procedures with output only parameters are currently not supported by the SQL agent.
- ❑ If you apply Windows XP SP2, you might need to reset the default security level of Internet Explorer for 'Upload' to function properly. To do this, in Internet Explorer select *Tools, Internet Options, Security, Local Intranet, Default Level*, and use the slider to select *Low*, then click *Apply*.
- ❑ When creating a JOIN, a timeout value set to zero, which indicates no limit, should never be used. Specifying an actual timeout value for the JOIN is recommended.

iWay Explorer

In this section:

Enhanced Support

Known Issues

The following topics provide information about iWay Explorer Release 5.5 Service Manager, Service Pack 1, and Service Pack 2.

Enhanced Support

- ❑ iWay Integration Tools for Eclipse are delivered as a set of plug-ins that extend the Eclipse environment to support design time components such as enterprise metadata discovery and Web service discovery.

Known Issues

- ❑ If you are using JCA configurations in iWay Explorer (Java Swing version), a copy of the j2ee.jar file is required in your Java environment. This can be accomplished by adding the j2ee.jar file to the [iWayHome]\lib directory. The j2ee.jar file is available for download from the Sun Microsystems Web site as part of the J2EE SDK.

iWay Transformer

In this section:

Enhanced Support

Resolved Issues

Known Issues

The following topics provide information about iWay Transformer Release 5.5 Service Manager, Service Pack 1, and Service Pack 2.

Enhanced Support

- ❑ Additional product samples are included for Transform and Ebix Entry projects.
- ❑ Ability to declare global special registers in a transformation.
- ❑ e-Business libraries (.ebl) are a collection of reusable metadata components that enable you to create customized data dictionaries, or structural data layouts. Supported formats include SWIFT, X12, EDIFACT, and HIPAA. System libraries and custom libraries are two types of e-Business libraries that are available. The system library, which is predefined and provided with iWay Transformer, contain metadata of standard messages for each format version. The main components of the standard message are transaction sets, loops, and segments. The custom library can contain customized elements you design as well as standard elements.
- ❑ The @EXIST function is provided to check if the context exists in the incoming document, for example, NULL context
- ❑ Ability to publish transformations to the iWay design time Registry.
- ❑ New function "Runtime" group which contains @set_sreg, @sreg_exists, and @remove_sreg functions.
- ❑ Ability to import schemas from the iSM Registry, from Service Manager configurations, and from iWay-hosted Web services.

- ❑ Extensible Stylesheet Language Transformation (XSLT) 1.0 is supported. XSLT 2.0 and higher is not supported.
- ❑ Various Mapping Builder improvements, such as editable preview.
- ❑ Menu bar selections and Project Navigator pop-up menu usability enhancements
- ❑ Ability to republish a Transform and Ebix Entry project with the same name
- ❑ Ability to import a dictionary from the e-business library
- ❑ Relative path is the default option for Transform projects
- ❑ EDI dictionary structure attributes are displayed in the tree structure when they are loaded into the Mapping Builder
- ❑ Enhancements include the signatures of functions within the notation for the values of global constants and replacement functions
- ❑ Addition of a drop-down list that contains pre-defined values for the operator of the @IF function

Resolved Issues

Service Pack 2

Design Time

- ❑ Support for schemas with complex extensions, associations and aggregations amongst the elements (30102039)
- ❑ Ability to load OAGIS schemas (31432564)
- ❑ Dictionary Builder to publish transforms to registry (31492530)
- ❑ Support for schemas containing complex types which further restrict datatypes (31342511)
- ❑ Support for multiple namespaces mapped to the same URI (32282015)
- ❑ Embedded request to generate syntactically correct SQL statement (32772541)
- ❑ Custom Functions support for setDescription method (32262524)
- ❑ Schemas containing complex data type definitions derived by restricting another complex data types (31342511)
- ❑ Ability to provide namespace prefix for a subtree (33392544)
- ❑ XML structure not displaying correctly (33382536)
- ❑ Ability to publish to iSM over SSL (33522537)

Run Time

- ❑ @SUBTRACT function to correctly handle decimal output (22902509)
- ❑ @JDBClookup function embedded within another function to correctly handle JDBC connection (30332540)
- ❑ XML namespace prefix applied to an attribute in root tag (30232508)
- ❑ @TRIM() support for data on Attributes (30952551)
- ❑ @SUBSTR,@LEN, @SUBTRACT functions backward compatability to iAM (30602524)
- ❑ Ability to use a forward slash in a Transform project tag name, for example, "a/b" in CSV output (40132508)

Service Pack 1

Design Time

- ❑ Support for schemas with complex extensions, associations, and aggregations among the elements (30102039)

Run Time

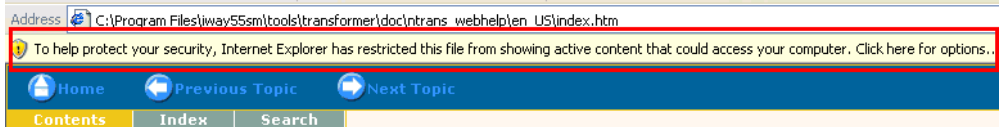
- ❑ @SUBTRACT function has been corrected to handle decimal output (22902509)
- ❑ Corrected output when using the 'less than' operation in IF statements for mappings (23552539)
- ❑ @JDBClookup function embedded within another function to correctly handle JDBC connection (30332540)
- ❑ An XML namespace prefix is now applied to an attribute in the root tag (30232508)

5.5 Service Manager

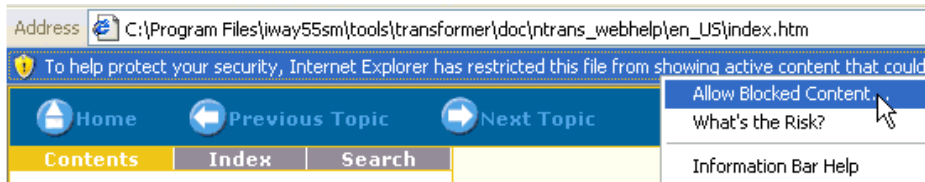
- ❑ Edit of XML embedded request database fields (21312026)
- ❑ Provide correct default value for Special Register functions (21172090)
- ❑ Support for complex nested schemas (21152095)
- ❑ @JDBClookup function handling of userid/password (21512120)

Known Issues

- ❑ If you are accessing iWay Transformer online Help using Microsoft Internet Explorer Version 6.0, some of the navigation options in the help system may not function properly. This is caused by an automatic feature in Internet Explorer that blocks active content by default, as seen by the message that is displayed in the following image.



As a workaround, click the message, and select *Allow Blocked Content* from the context menu, as shown in the following image.



- ❑ It is not recommended to use iWay Transformer with the HL7 format
- ❑ When iWay Transformer is installed on a Japanese operating system, some of the images in the Web Help may appear in English
- ❑ The @IF processing function evaluates both conditions
- ❑ iWay Transformer hangs when multiple SQL calls are contained in the @JDBCLOOKUP processing function. This issue is related to connection pooling. As a workaround, perform the following steps to increase the number of pooling connections:
 1. Stop iWay Service Manager and close iWay Transformer.
 2. Extract the **iwtranse.jar** and **iwtransw.jar** files, which are located in the <iWayHome>\lib directory using any archiving software, for example, WinZip.

Note: If you create a back up of these files, make sure you rename their extension from .jar to .bkp.
 3. Edit the following files in each .jar file:
 - common/JDBCDataSource_en_US.properties**
 - ntrans_common/JDBCDataSource_en_US.properties**
 4. Locate the **transform.jdbcDataSource.maxConnectionPoolSize** property (set to 10 by default) and change it to a higher number, for example, 100 or 1000.
 5. Save the files.

6. Jar the files within the extracted folders naming them the same (iwtranse.jar and iwtransw.jar respectively) and overwrite the existing .jar files.
7. Start iWay Service Manager and open iWay Transformer.

iWay Extensions

In this section:

Enhanced Support

This section contains enhanced support information that is applicable to the iWay Extensions in iWay Release 5.5 Service Manager (SM) Service Pack 1.

Enhanced Support

- ❑ iWay Enterprise Index support for Lucene

iWay Trading Manager

In this section:

Enhanced Support

This section contains enhanced support information that is applicable to iWay Trading Manager in iWay Release 5.5 Service Manager (SM) Service Pack 2.

Enhanced Support

- ❑ Trading Partner function supports control numbers

iWay Integration Tools

This section contains known issues and workarounds for iWay Integration Tools in iWay Release 5.5 Service Manager (SM) Service Pack 2.

iWay Explorer

The following error is generated when a JCA resource is used to connect to Application Explorer or Event Explorer:

`An internal error occured during: ConnectHostJob`

As a workaround, perform the following steps:

1. Obtain a copy of j2ee.jar.

2. Copy the j2ee.jar file to the following directory:

`<iWayHome>\tools\explorer\plugins\com.iwaysoftware.eclipse.common_5.5.11444`

where:

`<iWayHome>`

Is the directory where iWay Service Manager was installed.

3. Restart the JCA resource in iWay Explorer.

Application System Adapters

In this section:

iWay Application System Adapter for Oracle Applications

iWay Application System Adapter for J.D. Edwards OneWorld

iWay Application System Adapter for J.D. Edwards EnterpriseOne

iWay Application System Adapter for MySAP

iWay Application System Adapter for SAP

iWay Application System Adapter for Siebel

iWay Application System Adapter for Lawson

This section provides information about iWay Application System Adapters for Release 5.5 Service Manager, Service Pack 1, and Service Pack 2.

iWay Application System Adapter for Oracle Applications

In this section:

Enhanced Support

Resolved Issues

Known Issues

This section provides information about the iWay Application System Adapter for Oracle Applications for Release 5.5 Service Manager, Service Pack 1, and Service Pack 2.

Enhanced Support

Service Pack 2

- ❑ Support for Oracle Stored Procedures in environments where Oracle E-Business Suite is not installed. By introducing a parameter in the schemas of the Oracle APIs, users can now work on a non-Oracle E-Business application environment. By setting the `iwayoraapps` parameter to `N`, the adapter bypasses all Oracle E-Business logic, such as `FND_MSG_PUB`.
- ❑ Support for Oracle E-Business Suite Version 12.
- ❑ Support for Real Application Clusters (RAC) configured environments for high availability and load balancing. When creating a new target, users can provide values for TCP Timeout, Connection/LDAP URL, and Oracle Named Server parameters.
- ❑ Support for native PL/SQL including passing values at runtime by enabling users to use parameterized prepared statements. Once the SQL is coded, the adapter creates XML schemas.
- ❑ Support for all common database table functions such as `MAX`, `MIN`, `INSERT`, `AVG`, `CURSOR`, and so on.
- ❑ Execution of multiple SQL statements and batch processes within one transaction is supported using the new batch and iterate functionality.
- ❑ Access to Oracle Interface Tables through standard SQL access (Oracle database levels 8i, 9i, and 10g)
- ❑ Access to Oracle E-Business Suite via Oracle APIs (Oracle E-Business levels 11.5.7 through 12)

5.5 Service Manager and Service Pack 1

- ❑ Record and table type support for APIs (20802027)
- ❑ Enhanced error handling
- ❑ Standardized date type format handling for base tables
- ❑ Modification of WSDL not to include underscore characters (13432106)
- ❑ Enhanced support for NULL data (13462072)

Contact Customer Support Services to obtain files needed to support Oracle APIs and `concurrent.ora`.

Resolved Issues

Service Pack 2

- ❑ An SQL exception is generated when executing a procedure with a field in a table type exceeding 3k data (31242545)
- ❑ Parsing fails when data in an Oracle API table row does not start with row 1 at runtime (31242544)
- ❑ Incorrect response schemas for Oracle APIs are created, which is caused by the "wrapper" sending null values
- ❑ Root elements for request and response schemas are incorrect and create an invalid WSDL file

Known Issues

Service Pack 2

- ❑ Using 'Select' returns all record and disregards the filter. As a workaround, use prepared statements, where the user is free to code SQL.
- ❑ Nested tables and tables comprised of non-scalar objects besides PL/SQL records and tables are not supported. For example, tables comprised of VARRAYS, CLOBS are not supported
- ❑ The schema generated by the adapter lists all the Oracle API parameters as optional. There is no way to determine which parameters are required and which are optional from the data dictionary
- ❑ A package cannot consist of two or more stored procedures with the same name. Procedure overloading is not supported
- ❑ A procedure must have at least 1 IN parameter and 1 OUT parameter to be successfully executed by the adapter
- ❑ Oracle functions are not supported by the adapter
- ❑ It is a best practice to use the ojdbc14.jar thin driver. Other Oracle drivers provided by third-party application vendors may cause unexpected behavior
- ❑ On some Oracle application installs, the sequencing in the data dictionary can be in reverse order. As a workaround, the Oracle API must be recompiled
- ❑ The adapter does support custom APIs, but they must conform to all standard Oracle API development methodology
- ❑ It is a best practice to delete or archive the iway_wrapper_log.txt file periodically as this file can grow fairly large

- ❑ There is a known issue when generating the log file (iway_wrapper_log.txt) on Oracle 11.5.7 environments that run an Oracle 8i database.
- ❑ If the count of x_msg_data <= 1, then the value for x_msg_data is the value that the API passes as an output parameter. If the count of x_msg_data > 1, then the wrapper grabs the messages from the message buffer (fnd_msg_pub)
- ❑ Currently an 'APPS' user should be created in all non-Oracle environments to run stored procedures. Also, the schema in which the wrapper is installed must have execute privilege on all procedures that will be called by the wrapper
- ❑ The adapter does not support table functions under a schema if the table has a synonym related to that schema
- ❑ The adapter does not support procedures that are not in a package

iWay Application System Adapter for J.D. Edwards OneWorld

In this section:

Enhanced Support

This section provides information about the iWay Application System Adapter for J.D. Edwards OneWorld for Release 5.5 Service Manager Service Pack 1.

Enhanced Support

- ❑ Ability to create targets using the J.D. Edwards OneWorld adapter (22992537)

iWay Application System Adapter for J.D. Edwards EnterpriseOne

In this section:

Enhanced Support

Installation Notes

This section provides information about the iWay Application System Adapter for J.D. Edwards EnterpriseOne for Release 5.5 Service Manager Service Pack 2.

Enhanced Support

- ❑ Supports J.D. Edwards EnterpriseOne Version 8.12 with Tools Release 2.0

Installation Notes

- ❑ The following files must be copied from the `\\System\classes` folder of J.D. Edwards Enterprise server to `\\iway55sm\lib`:
 - ❑ Connector.jar
 - ❑ log4j.jar
 - ❑ Base_JAR.jar
 - ❑ System_JAR.jar
 - ❑ EventProcessor_EJB.jar
 - ❑ EventProcessor_JAR.jar
 - ❑ JdeNet_JAR.jar

iWay Application System Adapter for MySAP

In this section:

- Enhanced Support
- Resolved Issues
- Known Issues

This section provides information for the iWay Application System Adapter for MySAP for Release 5.5 Service Manager, Service Pack 1, and Service Pack 2.

Enhanced Support

- ❑ iWay Application System Adapter for MySAP connects to Unicode systems in Unicode mode only.
- ❑ iWay Application System Adapter for MySAP processes RFC/BAPI date formats against the SAP date format of the target system. Please confirm the correct format of the date components and separators with your SAP administrator.
- ❑ Since SAP ERP contains a large amount of interfaces, you may need to increase the Java HEAP memory if you need to perform the FIND operation using iWay Explorer. Add an operating system environment variable called `_JAVA_OPTIONS`, and assign the value as `"-Xmx$$$$M"` where `$` stands for an integer representing the memory amount. For example, `-Xmx512M`, assigns 512MB of memory to the HEAP. You assign a value higher than the available memory on the system. For more information, see your Java documentation.

- ❑ iWay Unicode support for ECC 5 & 6 SAP outbound messages are supported by a patch to SM SP1. If you wish to send SAP outbound IDocs from a Unicode system, please contact Customer Support Services to obtain a patch.

Resolved Issues

Service Pack 2

- ❑ iWay Application System Adapter for MySAP Unicode support (31092511)
- ❑ MySAP listener is returning trailing white spaces (31442528)
- ❑ Support for BAPI_ACC_DOCUMENT_POST (31282538)

Known Issues

Service Pack 2

- ❑ Japanese SAP Multiple Byte Character Systems (MBCS) may have issues with characters that are not available in the operating system code page that is selected by the SAP RFC Library. Using Unicode resolves the issue. In addition, you may need to manually adjust the code page to achieve the correct results.
- ❑ Date formats for the iWay Application System Adapter for MySAP have the following format:
 - ❑ RFC/BAPI – YYYY-MM-DD
 - ❑ IDoc – YYYYMMDD (no separators)

These formats apply regardless of the date format in the host SAP system or SAP user profile

iWay Application System Adapter for SAP

In this section:

SAP R/3 Legacy Support

Enhanced Support

Resolved Issues

Known Issues

This section provides information for the iWay Application System Adapter for SAP Release 5.5 Service Manager, Service Pack 1, and Service Pack 2.

SAP R/3 Legacy Support

iWay Application System Adapter for SAP is included for SAP R/3 legacy support only (existing usage). All new installations using SAP are required to use the iWay Application System Adapter for MySAP, which provides support for R/3 4.6C and 4.7, and SAP ERP ECC 5 &6. MySAP and SAP targets have incompatible formats and cannot be interchanged. All targets and schemas must be recreated, since there is no migration utility between these adapters.

Enhanced Support

- ❑ Modifications to tracing to enhance adapter performance
- ❑ IDoc autonumbering
- ❑ Enhancements to allow for multiple concurrent connections
- ❑ IDoc Status
- ❑ SAP data elements used as field types
- ❑ Support for SAP names in the form of `/ns/module`
- ❑ Support for the SNC token in password parameter
- ❑ Support for Flat IDocs batches inbound to SAP (13252060)

Resolved Issues

- ❑ SAP listener is returning trailing white spaces (31442528)
- ❑ SAP listener support for collected IDocs (13192016)
- ❑ When creating a target in iWay Explorer for an SAP system, you can now increase the pool size from one
- ❑ Support for BAPI_ACC_DOCUMENT_POST (31282538)

Known Issues

- ❑ When you configure an SAP event listener In the iWay Service Manager Administration Console, the Multithreading field has a default value that is set to 1. This value is insufficient for correct adapter processing. As a workaround, set the value to 3 for correct behavior of the event listener

iWay Application System Adapter for Siebel

In this section:

Enhanced Support

Known Issues

This section provides information about the iWay Application System Adapter for Siebel for Release 5.5 Service Manager, Service Pack 1, and Service Pack 2.

Enhanced Support

Service Pack 2

- ❑ Support for Siebel Version 8.0.
- ❑ Siebel connection pooling is supported by utilizing the Siebel.properties file.
- ❑ Siebel and custom objects in environments with multiple Siebel repositories are supported. The updated adapter now supports secondary repositories.

5.5 Service Manager and Service Pack 1

- ❑ Support for all 23 Siebel Industry Applications
- ❑ Support for Business Service method arguments of data type "Hierarchy"

Known Issues

Service Pack 2

- ❑ In Siebel 6.3, the adapter does not handle error messages correctly and always returns a success message
- ❑ When deleting a record that does not exist or querying for a record that does not exist, the adapter returns a success message without indicating that no such record exists in Siebel
- ❑ Multi-Value Groups (MVGs) with join specifications are not supported. As a workaround, perform a separate transaction to retrieve values in the MVG mapped business component
- ❑ Data types in generated request and response schemas are always type string and do not reflect the Siebel data types
- ❑ Date range queries are not supported
- ❑ System ID fields for business components are not displayed at design time. At run time, you can still include these fields in the XML payload

- ❑ If Force Active is not set, some business component fields cannot be updated via the adapter. As a workaround, set the Force Active field by using Siebel tools. This is applicable to Siebel version 7.5 and higher
- ❑ When creating a Siebel event channel the *Request Response* option must always be chosen. If the *Request* option is chosen, Siebel will emit multiple XML documents for the same event, thus creating duplicates
- ❑ When connecting to Siebel using the Java Data Bean Interface, you cannot reconnect after initial connection loss. This might occur when iWay Explorer experiences a brief loss of network connectivity or if the Siebel Server or Gateway Service is restarted while iWay Explorer is logged into the Siebel application.

As a workaround, to log in to the Siebel application successfully, restart your application server and iWay Explorer. This is a known Siebel API issue. Refer to Siebel Alert 984 for more information.

- ❑ On UNIX platforms, you must manually modify the script you use to start Service Manager to add a JVM option specifying the file encoding:
 - ❑ If you run Service Manager as a service (daemon), edit the script you use to start the service (e.g., `iway55Service.sh`) and add the JVM option to the last line, for example:

```
su $IWAYUSER -c "java $REMDBG -cp $CLASSPATH
-DIWAY55=$IWAY55-Dfile.encoding=ISO8859_1
com.ibi.service.edaqaSilentService
-config $IWAYCONFIG >> $IWAY55/serviceOut.txt &"
```

- ❑ If you do not run Service Manager as a service, edit the script you use to start Service Manager (for example, `iway55sm.sh`) and add the JVM option to the line that calls the Java command, for example:

```
java $REMDBG -cp $CLASSPATH
-DIWAY55=$IWAY55-Dfile.encoding=ISO8859_1edaqm
-config $SCRIPT $2 $3 $4 $5 $6
```

- ❑ If you deploy iWay to a third-party application server, and are using the adapter on a UNIX platform, you must manually edit the start script for that platform to add a JVM option specifying the file encoding:

```
java $REMDBG -cp $CLASSPATH
-DIWAY55=$IWAY55-Dfile.encoding=ISO8859_1edaqm
-config $SCRIPT $2 $3 $4 $5 $6
```

- ❑ If you are logged in as a Siebel user that does not belong to the team that owns the record being updated or deleted, then you cannot perform an action.

By default, the adapter is set to the “My” view. However, in Siebel Access Control, there are other views, such as the “All” view and the “Organization” view. Therefore, even if the user does not belong to the team and the record is not visible in the My view, the user may be able to update or delete the record through another view in the Siebel front end. This is not possible through the adapter. The adapter requires that the user is part of the team of the record being updated or deleted.

There are two possible workarounds:

- ❑ Log in through the adapter as a user that is already part of the team that owns the record that needs to be updated or deleted.
- ❑ Add the user to the team that owns the record to be updated or deleted.
- ❑ The adapter supports **OR** and **AND** operators only in the following way:
 - ❑ For the same field **OR** can be implemented, as in `<Name>Chatura or Steve</Name>`
 - ❑ For different fields, the adapter always treats it as an **AND**, so that `<Name>Chatura</Name><Location>New York</Location>` brings all records with name=Chatura AND location=New York.

Wildcards can be implemented by using “*”, as in `<Name>S*</Name>`

Note: Siebel supports the **NOT** operation with `<>`. However, this operator is not currently supported by the iWay Application System Adapter for Siebel.

iWay Application System Adapter for Lawson

In this section:

Enhanced Support

This section provides information about the iWay Application System Adapter for Lawson for Release 5.5 Service Manager SP1.

Enhanced Support

- ❑ Parser support for ampersand (&) characters in the data (22072077)
- ❑ Ability to handle data containing double quotation marks received in a response from Lawson (23552528)

e-Business Adapters

In this section:

Electronic Data Interchange (EDI) X12
iWay e-Business Adapter for HL7
iWay e-Business Adapter for HIPAA
iWay e-Business Adapter for SWIFT

This section provides information about iWay e-Business Adapters for Release 5.5 Service Manager, Service Pack 1, and Service Pack 2.

Electronic Data Interchange (EDI) X12

In this section:

Resolved Issues
Known Issues
ANSI EDI X12 Documents
Separators and Delimiters

This section contains resolved issues and known issues related to EDI X12 components that are applicable to iWay Service Manager in iWay Release 5.5 Service Manager (SM) Service Pack 2.

Resolved Issues

- ❑ All EDI X12 metadata has been programmatically regenerated, which resolves many past issues
 - Loop segments within documents have been renamed to use unique names rather than the name of the major segment in the loop. For example, the Name loop had an XML tag identifier of "N1", which was also duplicated within the loop by the N1 segment. Any user-customized metadata or user transforms should be inspected to see if this issue applies. Modification of customized metadata or user transforms is recommended to eliminate parsing errors
- ❑ Composite segments in metadata are renamed with unique identifiers for each segment if more than one of the same composite occurs in the same document segment

For example, the HI segment contains 12 occurrences of C022. In the prior version of the metadata, all 12 were called "C022"; they are now named "C022", "C022_1", "C022_2", and so on. Any user-customized metadata or user transforms should be inspected to see if this issue applies. Modification of customized metadata or user transforms is recommended to eliminate parsing errors

- ❑ Validating metadata is improved
- ❑ Separators and delimiters are read from inbound EDI documents rather than a hardcoded list
- ❑ Inbound documents can contain a single segment delimiter or carriage-return line feed (<CR><LF>). In previous releases, a prior restriction existed where all inbound files had to be <CR><LF> delimited
- ❑ PreParser reads full GS08 standard versions rather than only the first four characters. ANSI versions are "00XXXX" (for example, "004010"), VICS and UCS are "XXXXVICS" and "XXXXUCS". Future metadata releases will follow this format. For example, 4010 RAIL will be "4010RAIL" and 2003 Chrysler will be "2003CHRY"
- ❑ Support for VICS and UCS standards
- ❑ An Inbound 997 no longer creates an Outbound 997
- ❑ 997 has the same delimiters and separators as the inbound document
- ❑ LOC segments parse correctly
- ❑ Date and time fields in messages are validated for format and content
- ❑ A user-friendly error message is displayed if metadata can not be located due to a non-installed EDI EBIX standard
- ❑ Hard-coded asterisk ("*") delimiter for some documents has been removed
- ❑ NTE segments may not parse correctly in all documents in version 3010 or prior. Standard metadata only looks for NTE segments after the beginning segment. As a workaround, insert NTE segments where your partners are sending them. Most documents consistently have the NTE segments in the same location in the message
- ❑ Validation of the PKG code is now supported. Since it is possible for industry specific groups to issue their own codes, you may have to add these codes to the validation lists in the metadata. Please notify iWay Software Customer Support if you modify these lists and we will make an effort to include the new values in future releases
- ❑ Documents with embedded extraneous blank spaces parse correctly
- ❑ Documents with missing GS segments do not generate null pointer exception errors
- ❑ Standard inbound and outbound channels are available as packages for X12 and EDIFACT

- ❑ A model SDQ splitter is available as a process flow
- ❑ A model outbound invoice is provided
- ❑ A model outbound ASN is provided. This model uses SREG to insert the HL counters. The EDI HL functions in iWay Transformer are now obsolete and have been removed
- ❑ Metadata support for additional documents, including UCS and VICS standards
- ❑ Trading Partner integration is enhanced
- ❑ EDIX12SplitterPreParser (com.ibi.preparsers.EDISplitPP) can accommodate a file with multiple interchanges. To minimize issues, it is recommended to use EDIX12SplitterPreParser in your standard flows
- ❑ Extraneous blank spaces leading or trailing the document generate a null pointer exception

Known Issues

- ❑ Programmatic generation of EDIFACT standard metadata will be provided upon demand or in a future release
- ❑ An EDIFACT acknowledgement agent is not supported, but a workaround is available
- ❑ Interchanges with more than one Group create good 997 but may display erroneous console messages
- ❑ Inbound documents may not contain character-<CR><LF> (3 characters) as a segment terminator
- ❑ The question mark character "?" is not supported as a delimiter or terminator
- ❑ The question mark character "?" may be dropped from valid data because it is hard coded as the escape character. As a workaround, customize the transformation templates and choose another supported character. For more information, see [Separators and Delimiters](#) on page 48
- ❑ Valid EDI document creates reject 997
- ❑ The acknowledgement agent creates bad 997 if more than one Group is in the Interchange
- ❑ Metadata does not validate numeric fields correctly for the presence of alpha characters
- ❑ Date and time field errors go only to the log, and not 997
- ❑ Time in GS segment is GMT not local or system time
- ❑ EDIFACT documents may not validate correctly
- ❑ X12 BIN segment is not supported in this release

- ❑ Zone decimal transformation is not supported in this release as a feature. As a workaround, you can hardcode the field in the transformation to convert zone decimals to real or numeric decimals, or add a custom Java external subroutine
- ❑ Good documents will transform successfully and create good 997, but may issue erroneous console messages based on the segment count (SE01) in the document
- ❑ Interchanges with multiple documents will transform correctly, but their resulting output XML creates extraneous and apparently duplicated GS segments when immediately transformed back to X12 EDI. As a workaround, split the XML document into multiple files, each with a unique envelope
- ❑ EDIX12SplitterPreParser and EDIX12Preparser handle pre-parsing of documents differently. The EDIX12SplitterPreParser may not parse a single interchange with one document correctly. EDIX12SplitterPreParser creates one 997 per input file, but will now correctly accept or fail each document separately
- ❑ Conditional rules may not validate as expected based only on metadata. You may need to add validation rules to your transformation
- ❑ There is no native support for wrapped (80 or 128 characters terminated with <CR><LF>) data. If your VAN sends wrapped data or requires data to be wrapped for transmission, you should unwrap the mailbag before transformation and wrap the outbound data before sending it to the VAN
- ❑ Blank spaces (hex 20) used as element or subelement separators cause Java errors. EDI X12 recommends selecting the separator and terminator characters that are not present in your document. Since most documents do not contain the authentication elements (ISA03 and ISA05), and the ISA is a fixed length, these elements will be filled with spaces
- ❑ There is no standard validation report available for transformed data
- ❑ EDI X12 data that is transformed to XML and then transformed back to X12 may contain tags in one sequence in the input document and in a different sequence in the output document. For example, the order of REF segments is not guaranteed
- ❑ Standard document processing always creates 997. Currently there is no standard methodology to create 997 by trading partner or to turn off all 997. This will be addressed in a future release
- ❑ 997 are only available at the document level
- ❑ Processing large documents may result in an out of memory java error. The standard splitter reads multiple interchanges from a single file, and will read multiple single documents from an interchange. A standard solution to split large documents into smaller pieces for processing is currently not supported. Several workarounds exist depending on the document and the data being passed

- ❑ iWay Trading Manager (iTM) integration will be included in a future release
- ❑ 997 prior to version 4010 may have invalid error codes on failure
- ❑ Inbound documents with invalid loop counts (more loops than the standard will allow) produce positive 997 and an XML document
- ❑ Receipt of a document that is not installed produces incorrect error message "Invalid EDI Document Received" instead of "EDI Document not installed"
- ❑ Errors in parsing data return input document for error routing in Base 64 rather than CDATA
- ❑ Rules engine is invoked twice during a standard inbound or outbound transformation pass
- ❑ If a document is received with a segment that is not compliant to the standard, an error is created that rejects the segment. An "invalid count" error is also reported, even though the number of segments is correct
- ❑ Each custom transform must be in its own directory/folder/project. iWay Transformer does not allow you to save more than one GXP to a directory
- ❑ Standard XML to EDI transforms do not create correct fixed length ISA and IEA segments. Two workarounds are available:
 - ❑ Create a custom ebix for your documents and modify the XML to X12 transform to RPAD the ISA and IEA fields
 - ❑ Populate the intermediate XML (canonical) with the requisite number of blank spaces. If your data sources from an RDBMS, this may not be possible
- ❑ A custom Ebix created through Dictionary Builder may contain the wrong file name
- ❑ Dictionary Builder allows many opportunities to edit metadata. Extreme caution must be taken when changing values or adding information to not invalidate the metadata and create unexpected results. Future releases will replace dialog boxes with drop-down lists and tighten some of the other validations within the metadata framework
- ❑ Ampersands in field names may cause errors when building metadata with Dictionary Builder. As a workaround, create the .dic file, manually edit and remove the ampersand ("&"), and then re-import the file into Dictionary Builder
- ❑ EDIFACT metadata created from the Dictionary Builder as a custom Ebix may contain the wrong file names. All EDIFACT metadata must prefix with "FACT_"

- ❑ Some versions of EDIFACT and EANCOM will not transform correctly. The EDIFACT parser is constructing the metadata name incorrectly. As a workaround, edit the Ebix and change the file names to prefix "00" to version. For example, "FACT_ORDERS_00D96B"

ANSI EDI X12 Documents

The following is a list of all the ANSI EDI X12 documents that are included in this release.

X12 Version 2001

2001_810 2001_820 2001_823 2001_850 2001_997 2001_819 2001_822 2001_830
2001_861

X12 Version 2002

2002_856 2002_997

X12 Version 2003

2003_810 2003_820 2003_830 2003_850 2003_856 2003_860 2003_997

X12 Version 2040

2040_810 2040_846 2040_856 2040_864 2040_997 2040_820 2040_850 2040_860
2040_865 2040_830 2040_855 2040_862 2040_867

X12 Version 3010

3010_810 3010_824 3010_850 3010_856 3010_820 3010_832 3010_855 3010_997

X12 Version 3010VICS

3010VICS_850 3010VICS_852 3010VICS_997

X12 Version 3020

3020_204 3020_832 3020_855 3020_861 3020_210 3020_846 3020_856 3020_864
3020_810 3020_850 3020_857 3020_997 3020_830 3020_852 3020_860

X12 Version 3021

3021_853

X12 Version 3030

3030_810 3030_850 3030_856 3030_865 3030_997 3030_820 3030_855 3030_857
3030_867

X12 Version 3040

3040_810 3040_850 3040_856 3040_865 3040_997 3040_820 3040_824 3040_830
3040_832 3040_855 3040_857 3040_867

X12 Version 3050

3050_810 3050_830 3050_855 3050_865 3050_820 3050_832 3050_856 3050_867
3050_824 3050_850 3050_857 3050_997

X12 Version 3060

3060_180 3060_832 3060_855 3060_860 3060_810 3060_850 3060_856 3060_865
3060_820 3060_852 3060_857 3060_997

X12 Version 3070

3070_180 3070_852 3070_856 3070_860 3070_997 3070_850 3070_855 3070_857
3070_865

X12 Version 4010

4010_110 4010_180 4010_200 4010_204 4010_210 4010_213 4010_214 4010_303
4010_304 4010_309 4010_810 4010_811 4010_816 4010_820 4010_821 4010_824
4010_830 4010_831 4010_832 4010_846 4010_850 4010_852 4010_855 4010_856
4010_860 4010_861 4010_862 4010_864 4010_865 4010_867 4010_870 4010_875
4010_879 4010_880 4010_888 4010_889 4010_894 4010_940 4010_943 4010_944
4010_945 4010_990 4010_996 4010_997 4010_998

X12 Version 4010UCS

4010UCS_810 4010UCS_850 4010UCS_852 4010UCS_856 4010UCS_864 4010UCS_875
4010UCS_879 4010UCS_880 4010UCS_888 4010UCS_889 4010UCS_894 4010UCS_895
4010UCS_997

X12 Version 4010VICS

4010VICS_850 4010VICS_997

X12 Version 4020

4020_810 4020_879 4020_997 4020_850 4020_888

X12 Version 4030

4030_204 4030_812 4030_835 4030_855 4030_210 4030_820 4030_837 4030_856
4030_240 4030_824 4030_850 4030_864 4030_810 4030_834 4030_852 4030_997

X12 Version 4040

4040_141 4040_142 4040_204 4040_210 4040_214 4040_215 4040_270 4040_271
4040_276 4040_277 4040_278 4040_304 4040_810 4040_820 4040_823 4040_830
4040_832 4040_834 4040_835 4040_837 4040_840 4040_843 4040_844 4040_845
4040_849 4040_850 4040_852 4040_855 4040_856 4040_857 4040_860 4040_861
4040_862 4040_864 4040_865 4040_880 4040_940 4040_945 4040_997

X12 Version 4050

4050_810 4050_850 4050_856 4050_997

X12 Version 5010

5010_110 5010_240 5010_824 5010_855 5010_864 5010_180 5010_810 5010_832
 5010_856 5010_865 5010_204 5010_812 5010_846 5010_857 5010_870 5010_210
 5010_816 5010_850 5010_860 5010_997 5010_214 5010_820 5010_852 5010_861

X12 Version 5010UCS

5010UCS_880 5010UCS_894 5010UCS_997

X12 Version 5020

5020_997

X12 Version 5030

5030_810 5030_834 5030_850 5030_997 5030_820 5030_835 5030_856 5030_824
 5030_837 5030_857

Documents not on this list are available upon request.

Separators and Delimiters

This section lists the suggested separators and delimiters. In a future release this list will become mandatory.

Hex	Char	Hex	Char	Hex	Char
01	SOH	16	SYN	2F	/
02	STX	17	ETB	3A	:
03	ETX	18	CAN	3B	;
04	EOT	19	EM	3C	<
05	ENQ	1A	SUB	3D	=
06	ACK	1B	ESC	3E	>
07	BEL	1C	FS	3F	?
08	BS	1D	GS	40	@
09	TAB	1E	RS	5B	[
0A	LF	1F	US	5C	\

Hex	Char	Hex	Char	Hex	Char
0B	VT	21	!	5D]
0C	FF	23	#	5E	^
0D	CR	24	\$	5F	_
0E	SO	25	%	60	'
0F	SI	26	&	7B	{
10	DLE	27	'	7C	
11	DC1	28	(7D	}
12	DC2	29)	7E	~
13	DC3	2A	*	7F	DEL
14	DC4	2B	+		
15	NAK	2D	-		

iWay e-Business Adapter for HL7

In this section:

Enhanced Support

Known Issues

This section provides information about the iWay e-Business Adapter for HL7 for Release 5.5 Service Manager, Service Pack 1, and Service Pack 2.

Enhanced Support

Service Pack 2

- Performance Enhancements

Service Pack 1

- Ability to use the HL7 adapter in an iWay process flow (23062506)
- HL7LLP support for special registers as input parameters (22792528)

- ❑ HL7LLP enhancements to TCP socket handling (21352069)

5.5 Service Manager

- ❑ Support for complex (Level-3) HL7 inbound messages
- ❑ HL7 repeating field issue (144062)
- ❑ Performance enhancements (21462018)
- ❑ HL7 adapter will produce a negative acknowledgement if the adapter fails to produce XML (11672067)
- ❑ HL7LLP support to handle TCP socket exceptions (21352069)

Known Issues

- ❑ During HL7 to XML transformations, HL7 input data with CR (Carriage Return) as a segment delimiter and multiple MHS segments creates incorrect output XML (missing data in the XML)
- ❑ During HL7 to XML transformations, HL7 input data with CRLF (Carriage Return & Line Feed) or LF (Line Feed) as a segment delimiter and multiple MHS segments creates invalid output XML with an "eda" error
- ❑ HL7 is supported only when running in iWay Service Manager. It cannot be used in iWay Explorer when deployed to an iBSE configuration

iWay e-Business Adapter for HIPAA

In this section:

Known Issues

This section provides information about the iWay e-Business Adapter for HIPAA for Release 5.5 Service Manager Service Pack 2.

Known Issues

- ❑ During HIPAA to XML transformations, if the EDIX12SplitterPreparser is used in a channel configuration with an EDIX12AckAgent or XDHIPAAAckAgent, an incorrect 997 Acknowledgement is created (AK5*A and AK9*R)
- ❑ During XML to HIPAA transformations, the XDHIPAAPreEmitter in a channel configuration fails and generates a "NullPointerException" error. No output HIPAA documents are created.

iWay e-Business Adapter for SWIFT

In this section:

Enhanced Support

Resolved Issues

This section provides information about the iWay e-Business Adapter for SWIFT for Release 5.5 Service Manager and Service Pack 1.

Enhanced Support

Service Pack 2

- ❑ Support for SWIFT 2007 standards

Service Pack 1

- ❑ To make sure that iWay Service Manager applies the appropriate rules, transformations, and validation of an incoming message, you must bind a custom ebix before a system ebix during the channel configuration process.
- ❑ The 2006 Plus ebix contains metadata only required to transform and validate the MT 102+ and MT 103+ transactions. If you need to use the 2006 Plus ebix instead of the 2006 ebix for the above transactions, a 2006 Plus ebix must be configured before a 2006 ebix, so that appropriate transformation and validation rules apply. You must also select the appropriate version (2006 Plus) when configuring a preparer.

5.5 Service Manager

- ❑ Support for SWIFT 2006 standards
- ❑ SWIFT pre-parser support for block 4 delimiter (21372081)
- ❑ Metadata support:
 - Category 0: All messages except MT05, MT010, MT011, MT019, MT072, MT075, MT076, MT081, MT082, MT085, MT087, MT094
 - Category 1: All messages except MT121
 - Category 2: All messages
 - Category 3: All messages, except MT303, MT340, MT360, MT361
 - Category 4: All messages

Category 5: All messages except MT506, MT514, MT516, MT519, MT538, MT549, MT565, MT567, MT569, MT574_IRSLST, MT574_W8BENO, MT575, MT576, MT584, MT587-MT589

Category 6: All messages except MT600

Category 7: All messages except MT700, MT705, MT710, MT720, MT740

Category 8: All messages except MT821 and MT823

Category 9: All messages except MT960-MT967, MT999

Resolved Issues

Service Pack 2

- ❑ 97A tag not working on MT54x SWIFT messages (40092510)

Network Protocols

In this section:

Oracle AQ

This section provides information about network protocols in Release 5.5 Service Manager.

Oracle AQ

In this section:

Enhanced Support

This section provides information about the iWay Adapter for Oracle AQ.

Enhanced Support

- ❑ Support for Oracle Advanced Queueing Object queues

Technology Adapters

In this section:

iWay Adapter for RDBMS
iWay Technology Adapter for Java
iWay Adapter for ESRI

This section provides information about iWay Technology Adapters in Release 5.5 Service Manager, Service Pack 1, and Service Pack 2.

iWay Adapter for RDBMS

In this section:

Enhanced Support
Resolved Issues
Known Issues

This section provides information about the iWay Adapter for RDBMS for Release 5.5 Service Manager, Service Pack 1, and Service Pack 2.

Enhanced Support

Service Pack 2

- ❑ If a database contains more than 64 tables or procedures, you must use the Search Tool in Application Explorer to locate that table or procedure.
- ❑ In Service Pack 2, the schema for Batch has changed to allow any transaction to be executed within the batch any number of times without having to explicitly specify that transaction when the batch is created. This allows simplicity and flexibility within a batch. This incorporates both regular batch and batch iterate.

To create a batch, right click the *Batches* node and provide a batch name.

Based on the schema the batch will be created with the RDBMS and BATCH tag. In the BATCH tag, you must specify the transaction you wish to execute. For example, if you wish to execute a Statement, export the schema then derive the input XML. Then you must take the input XML from the Statement and place it in the BATCH tag within the BATCH request. For example:

```
<RDBMS>
<BATCH location="RDBMS/Batches/a:55012SP2">
  <AdapterParams location="RDBMS/Statements/sel" /
</BATCH>
</RDBMS>
```

If you wish to iterate the batch, simply enter the transaction you want to execute multiple times. For example:

```
<RDBMS xmlns="RDBMS/Batches/a:55012SP2:Request">
  <BATCH location="RDBMS/Batches/a:55012SP2">
    <AdapterParams location="RDBMS/Statements/ddd">
      <param0>param0</param0>
      <param1>>true</param1>
    </AdapterParams>
    <AdapterParams location="RDBMS/Statements/eee">
      <param0>param0</param0>
      <param1>>true</param1>
    </AdapterParams>
  </BATCH>
</RDBMS>
```

This functionality allows you to add any transaction in any order, and any number of times, just as long as the location is correct.

Note: If you try to create the input XML for Batch based on the schema, it will be prefixed with the namespace. You must remove this namespace before you execute the Batch in your browser. In addition, if you have an old batch request it will work with this Batch feature.

Service Pack 1

- ❑ Ability to pass space into NOT Null field (22412049)
- ❑ Connection pooling support for an Oracle repository (30482504)

5.5 Service Manager

- ❑ Ability to pass space into NOT Null field (22422058)
- ❑ Improvements to ensure unique records (21582065)
- ❑ Backward compatibility with previous BATCH iterate formats (21102103)
- ❑ Ability to create Web services for Informix stored procedures (20762050)

- ❑ Support for SQL Server 2005 targets
- ❑ Support for Hypersonic targets

Note: A standalone instance of the embedded HSQL database installed with iWay Business Services Provider is supported in this release. Support for other connection options is scheduled for a future release.

DB2 Support

As of Release 5.5 SM Service Pack1, DB2 version 9 is supported. This DB2 version only supports Type 4 Driver (JCC). In addition, IBM has deprecated Type 2 and Type 3, and has desupported both versions.

For DB2 Version 8, Type 2, Type 3, and Type 4 are supported. RDBMS users are allowed to use Type 2 and Type 3 only when going against DB2 version 8.

Oracle CLOB Data Type

As of Release 5.5 SM Service Pack1, to expose the Oracle CLOB data type to the iWay Adapter for RDBMS, you must create the GETCLOB stored procedure. This stored procedure calls the `dbms_lob.createtemporary(c1, true)` database procedure, which is not exposed to Java. In most cases the Oracle CLOB data type may already be exposed, but if you receive an error while trying to access CLOB data, you must create the following stored procedure in your database:

```
CREATE OR REPLACE PROCEDURE sa.getclob( c1 out clob)
AS
BEGIN
dbms_lob.createtemporary(c1,TRUE);
END getclob;
/
```

Resolved Issues

Service Pack 2

- ❑ Batch iterate support for rollback (30932526)
- ❑ iWay Adapter for RDBMS support for Oracle RAC (Real Application Clusters) (31432518)
- ❑ iWay Adapter for RDBMS support for INOUT parameters (31372573)
- ❑ Data for a Packed field returned from an iWay Data Server was incorrectly rounded (31572540)
- ❑ iWay Adapter for RDBMS support for JDBC access to DB2 on z/OS (32142011)
- ❑ Deleting RDBMS targets does not delete statements in the iBSP repository. (32702510)

- ❑ The data type for a parameterized SQL statement is maintained when it is added to an iWay package (32712517)

Known Issues

- ❑ To enable commit/rollback functionality in a batch iterate process on the AS/400 platform, the library and file must be journaled. From a green screen to AS/400, the following commands can be executed to determine whether the library and file are journaled:

If a journal has already been created using QSQJRN, you can start journaling on files using the following command:

```
STRJRNP FILE (Library/File) JRN(Library/QSQJRN)
```

To determine whether a file is journaled, use the following command:

```
DSPOBJD Library/File *FILE *FULL
```

- ❑ If you retrieve an Oracle DATE field from Oracle 9i and higher using the iWay Adapter for RDBMS, the time portion of the DATE field is not returned. The reason for this is because TIMESTAMP support is added in Oracle 9i and higher. As a result, the DATE datatype is mapped to Date and TIMESTAMP is mapped to Timestamp. If you need to retrieve DATE and TIME values in a field, you must use the TIMESTAMP datatype instead of DATE.

As a workaround, you must add the following property in the Java Settings pane of the iWay Service Manager Administration Console and set it to *True*:

```
java -Doracle.jdbc.V8Compatible
```

For example:

Additional Java System Runtime Properties

Properties - The table below lists the names and values of properties that will be added next time the server starts. You may add, edit or delete the values as required.

	Property	Value
<input type="checkbox"/>	java -Doracle.jdbc.V8Compatible	true

After the property is added, restart iWay Service Manager.

iWay Technology Adapter for Java

In this section:

Enhanced Support

This section provides information about the iWay Technology Adapter for Java for Release 5.5 Service Manager Service Pack 2.

Enhanced Support

The iWay Technology Adapter for Java allows you to reuse your existing Java objects within an iWay Service Manager environment.

iWay Adapter for ESRI

In this section:

Enhanced Support

This section provides information about the iWay Adapter for ESRI for Release 5.5 Service Manager Service Pack 1.

Enhanced Support

- ❑ Support for ArcSDE update (21002079)
- ❑ Support for multiple ESRI adapter nodes in a process flow (22022078)

Terminal Emulation Adapters

In this section:

iWay Emulation Adapter (3270/5250)

This section provides information about iWay Terminal Emulation Adapters for Release 5.5 Service Manager, Service Pack 1, and Service Pack 2.

iWay Emulation Adapter (3270/5250)

In this section:

Enhanced Support
Resolved Issues
Known Issues

This section provides information about the iWay Emulation Adapter (3270/5250).

Enhanced Support

- ❑ Provides an Eclipse plug in providing access to a 3270/5250 environment

Resolved Issues

Service Pack 2

- ❑ Support for double byte fields (31922517)

Known Issues

- ❑ When using the iWay Emulation Adapter (3270/5250), note that design time is only supported on the Windows operating system. If you want to use UNIX in your configuration, you must install the iWay Telnet Designer client on Windows. If you need additional assistance with the configuration of a dual platform environment, contact iWay Software Customer Support.

Transaction Adapters

In this section:

iWay Transaction Adapter for CICS
iWay Transaction Adapter for IMS

This section provides information about iWay Transaction Adapters in Release 5.5 Service Manager Service Pack 1, and Service Pack 2.

iWay Transaction Adapter for CICS

In this section:

Enhanced Support
Resolved Issues

The following topic provides information about iWay Transaction Adapter for CICS (XML) Release 5.5 Service Manager, Service Pack 1, and Service Pack 2.

Enhanced Support

- ❑ Allow users to enter STACK parameters as part of Natural Logon Parameters (30882550)
- ❑ CICSPreEmitter support for multiple records (32852517)
- ❑ CICS support of converting long packed fields to bytes
- ❑ Support for bi-directional legacy metadata translation for Events
- ❑ Separation of "multi-record" and "use full fd" processing

Resolved Issues

Service Pack 1

- ❑ When the output buffer on a service is the same as the input buffer, for example, in an echo program, CICS sends 0 bytes. The adapter now interprets this as an unchanged buffer and returns the bytes. In previous releases, the adapter generated the following exception:

```
0 length buffer received
```

iWay Transaction Adapter for IMS

In this section:

Enhanced Support

The following topic provides information about iWay Transaction Adapter for IMS Release 5.5 Service Manager, Service Pack 1, and Service Pack 2.

Enhanced Support

Service Pack 2

- ❑ Support for bi-directional legacy metadata translation for Events

- ❑ Separation of "multi-record" and "use full fd" processing

5.5 Service Manager and Service Pack 1

- ❑ Support for Zoned data (20602038)
- ❑ Large picture clause no longer yields a stack overflow message (21562060)
- ❑ Ability to pass arbitrary binary data to IMS

Customer Support

Do you have questions about iWay 5.5 Service Manager SP1?

Customer Support consultants are available Monday through Friday between 8:00 A.M. and 8:00 P.M. EST to address your iWay 5.5 Service Manager SP1 questions. Information Builders consultants also can give you general guidance regarding product capabilities and documentation. Please be prepared to provide your six-digit site code (xxxx.xx) when you call.

Important: When creating a package to allow Customer Support Services to diagnose a problem, be sure the export package that you create contains all components necessary for reproducing the problem.

You also can access support services electronically, 24 hours a day, with InfoResponse Online. InfoResponse Online is accessible through our World Wide Web site, <http://www.informationbuilders.com>. You can connect to the tracking system and database of known problems at the Information Builders support center. Registered users can open, update, and view the status of cases in the tracking system and read descriptions of reported software issues. New users can register immediately for this service. The technical support section of www.informationbuilders.com also provides usage techniques, diagnostic tips, and answers to frequently asked questions.

To learn about the full range of available support services, ask your Information Builders representative about InfoResponse Online, or call (800) 969-INFO.